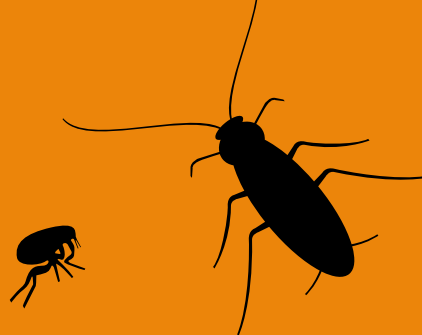


# Catalyst™

**EMULSIFIED IN WATER INSECTICIDE**



**EFFECTIVE CONTROL FOR ROACHES AND FLEAS**  
**AVAILABLE THROUGH PCOs**

## SPECIMEN LABEL

### ACTIVE INGREDIENT:

Propetamphos[(E)-1-methylethyl 3-[[ethylamino) methoxyphosphinothioyl] oxy]-2-butenate] 18.9%

**INERT INGREDIENTS:** ..... 81.1%  
Total ..... 100.0%

EPA Reg No. 2724-450

KEEP OUT OF REACH OF CHILDREN

### **WARNING**

See additional precautionary statements.

### **PRECAUTIONARY STATEMENTS** **HAZARDS TO HUMANS AND** **DOMESTIC ANIMALS**

#### **WARNING**

May be fatal if swallowed. Harmful if inhaled or absorbed through skin. Avoid breathing vapor or spray mist. Wash thoroughly with soap and water after handling and before eating, drinking, or using tobacco. Remove contaminated clothing and wash contaminated clothing before reuse.

Prior to application remove all pets and birds from areas to be treated. Cover aquariums and unplug all filters and related equipment. Treatment area should be thoroughly dry before returning pets and uncovering aquariums.

### **STATEMENT OF PRACTICAL TREATMENT**

#### **IF SWALLOWED**

Call a physician or poison control center. Drink 1 or 2 glasses of water and induce vomiting by touching back of throat with finger. Do not induce vomiting or give anything by mouth to an unconscious person.

#### **IF ON SKIN**

Wash with plenty of soap and water.

#### **IF INHALED**

Remove victim to fresh air. If not breathing, give artificial respiration preferably mouth to mouth. Get medical attention.

#### **IF IN EYES**

Flush eyes with plenty of water. Call a physician if irritation persists.

### **NOTE TO PHYSICIAN**

Propetamphos, an organophosphate compound, is a cholinesterase inhibitor. Atropine with 2-PAM is the emergency antidote if symptoms of cholinesterase inhibition are present.

### **PHYSICAL AND CHEMICAL HAZARDS**

Do not use, pour, or store near heat or open flame.

### **DIRECTIONS FOR USE**

It is a violation of Federal Law to use this product in a manner inconsistent with its labeling.

## GENERAL INFORMATION

CATALYST provides effective control of listed pests in buildings and structures. **For Indoor Use Only.** Permitted sites of application include but are not limited to homes, apartment buildings, stores, schools, nursing homes, hospitals and industrial buildings. CATALYST may also be used in food service establishments. CATALYST mixes easily with water and may be applied with most sprayers. Diluted spray mixture may be stored overnight and used the following day, but mixture should be agitated well prior to application to prevent the uneven distribution of product. Do not apply as a space spray. CATALYST in recommended dilutions is nonstaining and does not cause damage to fabrics, plastics, paints, or other surfaces which cannot be damaged by water alone. Do not apply where electrical short circuits might result.

**Repeat treatment as needed but not more than once every 7 days, and not to exceed 2 treatments in a 30 day period.**

## SPECIFIC INSTRUCTIONS

Prepare a CATALYST spray-mix equal to a 0.5 to 1.0% concentration of active ingredient per gallon of finished solution according to the following dilution table:

To make 1 gallon of finished spray equal to:	Dilution Rate
0.5% ai conc.	Use 3.20 oz per gallon of water
1.0% ai conc.	Use 6.40 oz per gallon of water

Where a rate range is indicated, use the low rate for light infestations or monthly maintenance sprays, and the higher concentration for heavy infestations, initial cleanout, or where a longer period of residual control is desired.

NOTE: Following treatment, thorough ventilation of treated areas, by occupant before re-entry, may reduce potential odors. In buildings with restricted air flow, such as office buildings, ventilation is enhanced by adjusting ventilation systems to include outside air for 24 hours.

### GENERAL SURFACE APPLICATION: (FLEAS, BROWN DOG TICKS)

Apply as a 0.5% ai fine spray to infested rugs, floor coverings and upholstered furniture, taking care to treat between and under cushions of furniture and under edges of floor coverings where possible. Use approximately 1 gallon of finished spray per 1500 sq ft. Entire rugs may be treated. Pet beds and frequented resting areas including adjacent cracks and crevices should also be treated. Old bedding should be removed and replaced with clean fresh bedding after premises are treated. Do not treat pets with this product. Keep all persons and pets out of treated area until treated surfaces have dried. [For ticks, allow 48 hours of exposure to treated surfaces for control to be evident.]

### SPOT AND CRACK & CREVICE APPLICATIONS: (COCKROACHES, ANTS, CRICKETS, FIREBRATS, PILLBUGS, SOWBUGS, SILVERFISH, CARPENTER ANTS, SPIDERS, CARPET BEETLES, BOXELDER BUGS, EARWIGS, GROUND BEETLES, EXPOSED TERMITES)

Apply as a 0.5% - 1.0% ai spot or crack and crevice treatment where these pests normally occur such as baseboards, storage areas, shelving, closets, around water pipes, doors and windows, behind and under refrigerators, cabinets, sinks and stoves, the underside of shelves, drawers, wall voids, corners, and similar areas. [For control of ants, apply spray mix to ant trails, ant nests, around doors and windows and other places where ants may enter structures.]

### GALLERY APPLICATION: (TERMITES)

Locate areas of suspected infestations. Drill pilot holes eight to ten inches apart into galleries and voids applying a 1% ai spray using appropriate low pressure equipment with a crack & crevice or injection tube nozzle. Apply sufficient material to fill voids and galleries. All pilot holes into which material has been applied must be plugged. Do not use in areas where contact with electrical lines or equipment is a possibility or in areas where a potential shock hazard exists.

### SPRAY APPLICATION: [PANTRY PESTS-EXPOSED STAGES (SAWTOOTHED GRAIN BEETLE, RED FLOUR BEETLE, CONFUSED FLOUR BEETLE, CIGARETTE BEETLE)]

Remove all foodstuff, utensils and shelf paper from area to be treated. Discard used shelf paper and any infested foodstuffs. Apply a 1.0% ai spray to shelves and cupboards. Allow spray to dry. Apply fresh shelf paper prior to replacement of food and utensils.

### FOOD SERVICE ESTABLISHMENTS:

Application is limited to spot or crack and crevice treatments in food service establishments such as restaurants, cafeterias, taverns, delicatessens, mess halls, school and institutional dining areas, hospitals, mobile canteens, vending machines, groceries and markets. Prepare a CATALYST spray-mix diluted with water as directed above and apply in small amounts directly into cracks and crevices using equipment capable of delivering a pinstream in points between different elements of construction, between equipment and floors, openings leading to voids and hollow spaces in walls, equipment legs and bases where Cockroaches, Ants, Silverfish, Firebrats, Spiders and Crickets hide. Spot treatment may also be made to areas where any of the above pests occur such as baseboards, storage areas, closets, around water pipes, doors and windows, behind and under refrigerators, cabinets, sinks, stoves and other equipment, the underside of shelves, drawers and similar areas. Make low pressure applications to avoid contamination of food and food preparation surfaces. For applications in **nonfood areas** of food service establishments, refer to instructions given above for the pest in question.

## **STORAGE & DISPOSAL**

Do not contaminate water, food or feed by storage or disposal.

### **STORAGE**

Store in a cool, dry and ventilated area away from humans, pets, foodstuffs and feed. Do not store near heat or open flame. Keep from freezing.

### **PESTICIDE DISPOSAL**

Pesticide wastes are toxic, improper disposal of excess pesticide, spray mixture, or rinsate is a violation of Federal Law. If these wastes cannot be disposed of by use according to label instructions, contact your State Pesticide or Environmental Control Agency, or the Hazardous Waste representative at the nearest EPA Regional Office for guidance.

### **PLASTIC CONTAINER DISPOSAL**

Triple rinse (or equivalent). Then offer for recycling or reconditioning, or puncture and dispose of in a sanitary landfill, or incinerate, or, if allowed by state and local authorities, by burning. If burned, stay out of smoke.

Seller makes no warranty, express or implied, concerning the use of this product other than indicated on the label. Buyer assumes all risk of use and handling of this material when such use and handling are contrary to label instructions.



Wellmark International  
Bensenville, Illinois U.S.A.

CATALYST™ and ZOECON® are trademarks of  
Wellmark International  
©1997 WELLMARK INTERNATIONAL

October 1997  
Bensenville, IL